



QuickInstall Instructions

VAMP-LT DISPLAY

Use these instructions to install your new VAMP-LT Display flat panel monitor on your computer and to set it up for use. The VAMP-LT is offered in several configurations, with several sizes of flat panels and different touch screens. We've chosen a typical configuration, a high-resolution color Liquid Crystal Display and a resistive touch screen for these instructions.

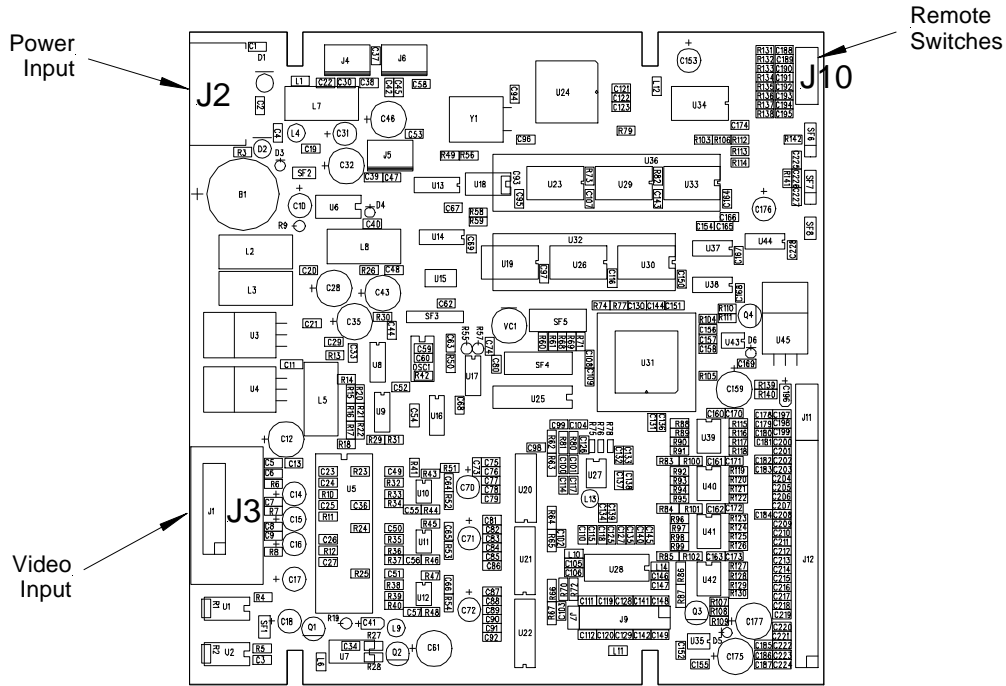
Unpacking

Your product was packed at the factory for maximum protection during shipment. If any shipping damage is noted upon receipt, report it to your shipper. When unpacking, the following items should be included:

- VAMP-LT Display Flat Panel Monitor
- Remote Switches and Cable
- HD-15 M/M Video Cable
- Power Supply (when ordered separately)
- RS-232 Serial Extension Cable (for Optional Touchscreen)
- Driver Disks (for Optional Touchscreen)
- QuickInstall Instructions (this document)

Installation

1. Connect the Video Cable to the Video Input (J3) connector on the rear of the VAMP-LT Display and to the video output from your computer.
2. Connect the Remote Switch cable to the Remote Switch (J10) connector on the rear of the VAMP-LT Display.
3. Make sure Power switch on Power Supply is in the OFF position, then connect to the Power connector (J2) on the rear of the VAMP-LT Display.
4. Check all connections, then power on both the VAMP-LT Display and the Computer.
5. The Touch Screen is factory connected to an RS-232 serial port DB-9 Female connector on the back of the VAMP metalwork. The touch screen can communicate with your PC via any available COM port, using a standard serial cable (supplied).



Rear Panel Connector Locations

Video Setup

1. When your computer powers up, make sure you have a video image on the screen.
2. If no image is seen, check your power connections and the video source. If your video source is not detected you will see a message on the display. You will need to adjust your video source to 640 x 480 (VGA) Non-Interlaced at a refresh rate of 70 Hz or less.
3. If the image is not of an acceptable quality (i.e. wrong position, not sized, image movement), you may need to adjust the system as follows.
4. The Remote Switch keys perform the following functions while in the setup mode:

Control Switches

Function		Switch B	Switch A	Mode Switch	Position
B	A				
Tone Brightness Vertical	Backlight Contrast Horizontal				

Each switch is a 3 position momentary switch with the center position being the rest position. The **MODE SWITCH** determines what attribute the other two switches control.

5. Leave **MODE Switch** in center position, adjust brightness (**Switch B**) and contrast (**Switch A**) as desired.
6. If running Windows™, opening a full screen window will help in positioning the display image (File Manager or Explorer works well).
7. Place the **MODE Switch** in the DOWN position, adjust the horizontal position (**Switch A**), aligning the left edge of the open window with the left edge of the display panel viewing area.
8. Keeping the **MODE Switch** in the DOWN position, adjust the vertical position (**Switch B**), aligning the top edge of the open window with the top edge of the display panel viewing area.
9. The **MODE Switch**, when placed in the UP position, will allow switching the Backlight ON/OFF (**Switch A**) and adjusting the tone of the audio alert signal (**Switch B**).
10. When all settings have been completed, allow all switches to return to the CENTER positions.

TouchScreen Setup

1. On touchscreen equipped VAMP's, drivers for Windows 3.11, 95/98 and NT were included with your product.
2. Place the Monitor Mouse diskette (Universal Touchscreen Driver) for your operating system into your computers floppy drive.
3. Follow the instructions on the Readme file on the diskette to complete the Touchscreen installation.
4. The drivers will only work on COM1 or COM2 (9600, N, 8, 1) using the smartset protocol for the Accutouch controller.
5. You must calibrate the touchscreen prior to use.

Congratulations!

You have completed setup of your VAMP-LT Display and it is ready for use. You may repeat the setup procedures above whenever it is necessary to change the display characteristics for a different video mode or computer installation.

Options

1. Touch screen
This unit is available with a factory installed Touchscreen which includes drivers for Windows 3.11, 95 and NT and Monitor Mouse software.
2. Stainless Steel NEMA-4X
This unit is available with a stainless steel NEMA-4X front Bezel.

For these and other options, please contact your Computer Dynamics Applications Engineer or Sales Representative.

Technical Support

For further technical details you may visit our web-site at:

www.codynamics.com/support/manuals

If you are experiencing problems with your VAMP-LT Display, or if you require additional information for your Computer Dynamics Applications Engineer with the pm, Eastern

fax or



Computer Dynamics, Inc.
7640 Pelham Rd
Greenville, SC 29615

Phone: (864) 627-8800
Fax: (864) 675-0106
Email: sales@codynamics.com

VAMP-lt QInst.doc

2000-04-14