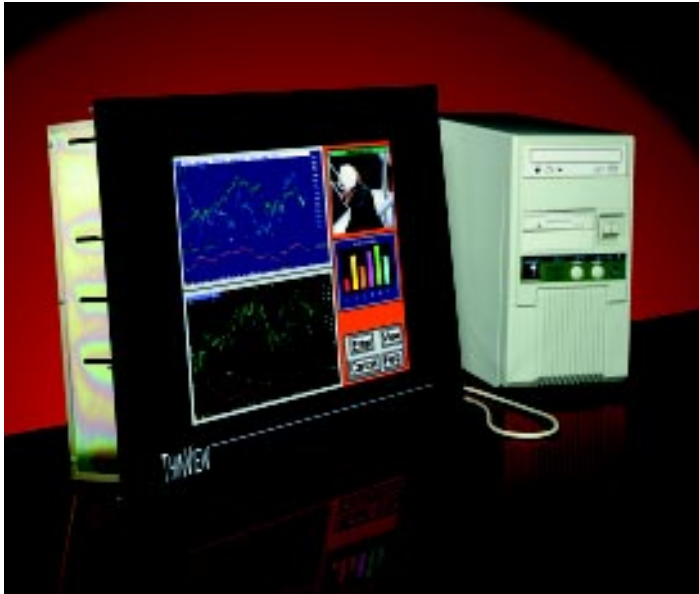


Product Specifications

ThinView-18

18.1" Panel-Mount Flat Panel Monitor



The ThinView-18 flat panel monitor with an integrated resistive touchscreen features an 18.1" active matrix color TFT LCD. It has a NEMA 4 rating on the front surface, with the front bezel ready to be panel-mounted to your equipment (mounting studs are included). Bezels are constructed of painted metal with a fingerprint-proof, clear plastic overlay. The anodized aluminum rear cover is vented for heat dissipation, and provides protection for all electronics.

The ThinView-18 accepts PC-compatible VGA signals from any standard video source. It also features our SmartSize™ capability to display lower resolution images on higher resolution screens, and to handle interlaced, full-motion video and progressively scanned computer graphics.

Display Specifications

- Display -SH46 18.1" 1280x1024, 16.7M color AMTFT LCD
- Standard input Standard analog RGB
- Linear expansion Seamless expansion to fill entire screen for NTSC/S-Video/PAL:
 - 640x350
 - 640x400
 - 640x480
 - 800x600
 - 1024x768

Touchscreen Specifications

- Type Analog resistive
- Resolution 4096x4096, >100,000 touchpoints/in.²
- MTBF (Sensor) 35 million touches/spot
- O/S driver Windows 95/98, 2000 and NT
- Stylus All types
- Transmissivity 75%

Options

- UHB -H946 Ultra-HiBrite, 900 nit or greater display
- Input signal -NTSC NTSC/S-Video/PAL
-SOG Synch-on-Green
-COMP Composite Synch

Ordering Information

ThinView-18-<Display>-Options



Embedded Systems

GE Fanuc Embedded Systems Information Center — Greenville Location

Computer Dynamics, 7640 Pelham Road, Greenville, SC 29615

Phone: (864) 627-8800 • Fax: (864) 675-0106 • www.gefanuc.com/ipc

© 2004 GE Fanuc Automation Americas, Inc. All rights reserved. Celeron, Intel and Pentium are registered trademarks of Intel Corporation. Windows is a registered trademark of Microsoft Corporation. All other brands or names are the property of their respective holders. Specifications are subject to change without notice. Reproduction or copying of images is prohibited without the express written permission of GE Fanuc Embedded Systems, Inc.07/04